

NYALIC MARINE



NEW TOURIST VESSEL LAUNCHED

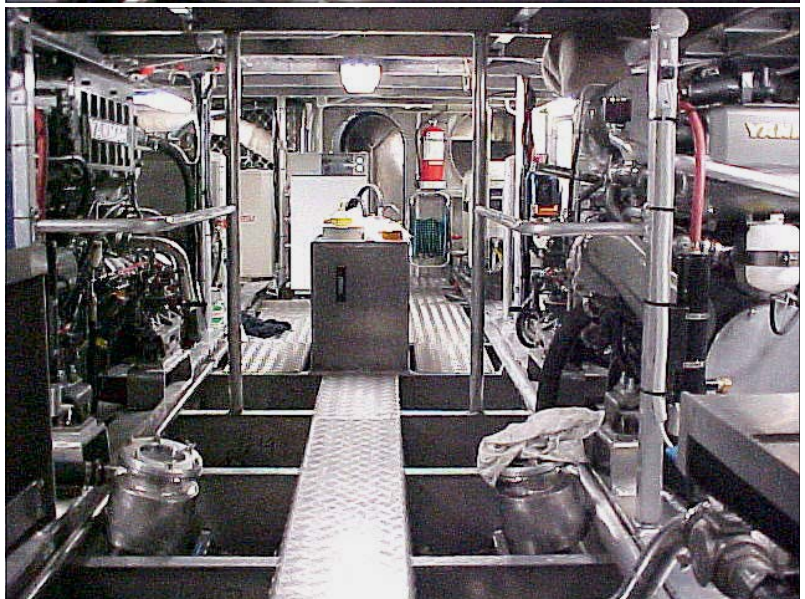
From bare bones to a glorious tourist ship. **Mitre Peak II**

Nyalic® coated from internal framing, to engine room and all hull - inside and out

Acid washed to achieve the patina ... the Nyalic® application achieves the spectacular gloss.

Mitre Peak truly sparkled as she was eased from her build shed.

Well done Gough Brothers



www.nyalic.co.nz www.nyalic.com.au www.nyalic.com

AU/INT AND PACIFIC ISSUE DEC 04